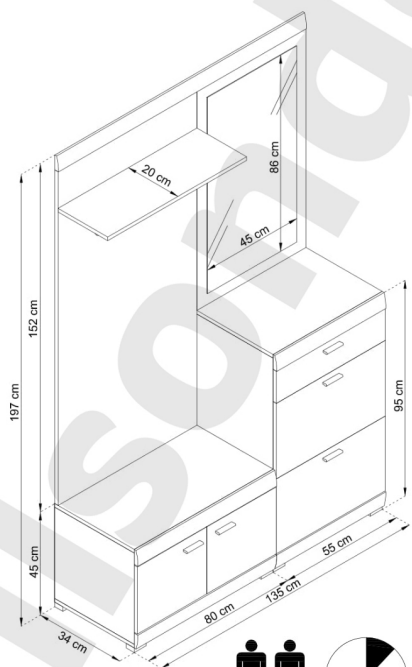
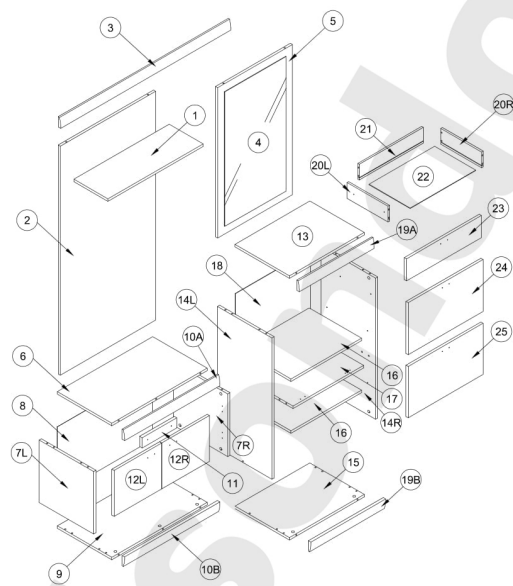


PL - GARDEROBA ALFA /  
SK - VEŠIAKOVÁ STENA ALFA /  
HU - ALFA ELŐSZOBAFAL



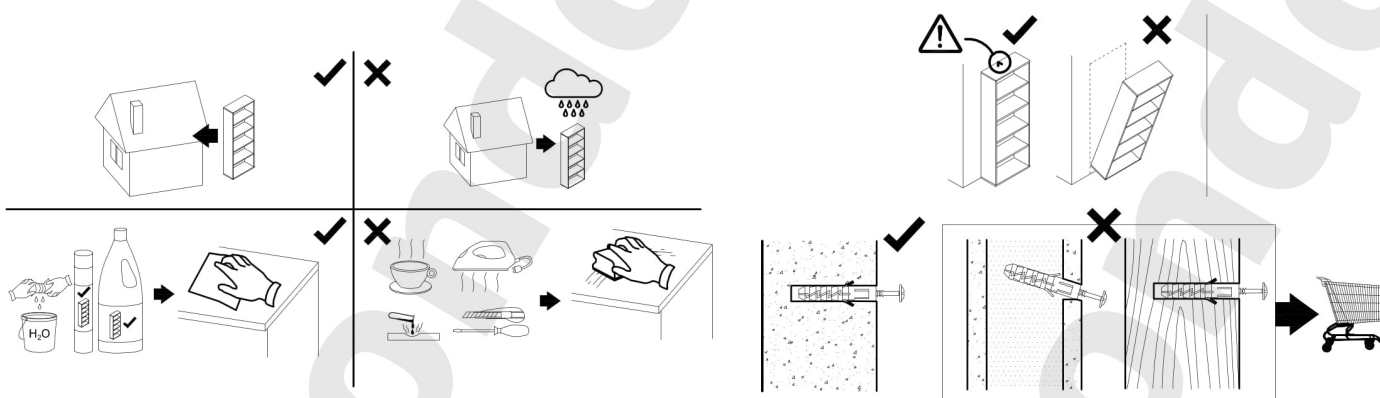
(D) Montageanleitung  
(FR) Notice de montage  
(NL) Handleiding voor de montage  
(CZ) Montážní návod  
(HU) Szerelési útmutató  
(TR) Montaj talimatı

(GB) Assembly Instructions  
(IT) Istruzioni di montaggio  
(PL) Instrukcja montażu  
(SK) Návod na montáž  
(RO) Instrucțiunile de montaj  
(RU) Инструкции по монтажу



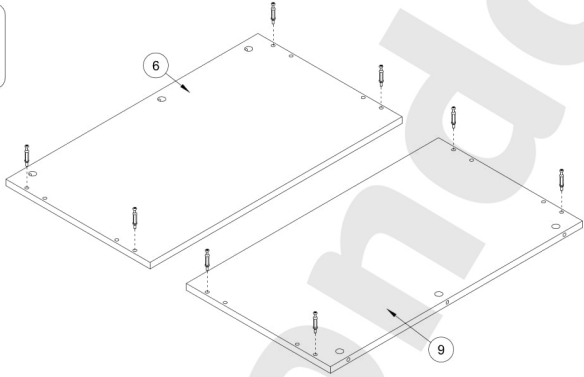
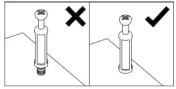
V	3x13	NF	4x30	TB	TA	K3	4x25	YD	7x50	BL	
	x6	x2	x2	x1	x1	x16	x4	x4	x3		
PPW	O	P	HK	GLUE	WB	XA	HA				
	x2	x2	x2	x3	x1	x1	x8				
C	Z	Y	PR	H	6.3x13	Z	RR	1/2	ND	3.5x16	
	x34	x34	x8	x2	x16	x8	x2	x2	x26		
B	A	6x32	RC	N	3x20	M1	RCZ	NA	4x13	PC	
	x34	x20	x4	x34	x5	x2	x2	x17	x4		

**⚠ Uwaga • Upozornění • Achtung • Attention • Caution • Figyelem  
 Attenzione • Opgelet • Внимание • Atenție • Upozornenie • Dikkat ⚠**

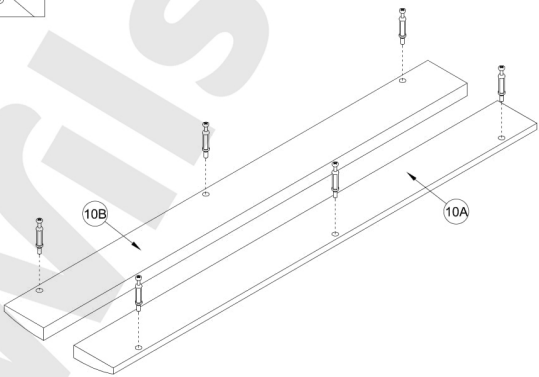
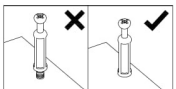


PL	Czyszczenie należy wykonać wyłącznie za pomocą ściereczki lub lekko nawilżonego ręcznika. Nie stosować środków czyszczących do szorowania.
CZ	Čistení je nutné vykonávať výhradne pomocí utěrky nebo lehce navlhčeného ručníku. Nepoužívejte čisticí prostředky obsahující abrazivní částice.
DE	Bitte nur mit einem Staubtuch oder leicht feuchtem Lappen reinigen. Keine scheuernden Putzmittel verwenden.
GB	Please only clean with a duster or damp cloth. Do not use any abrasive cleaners.
FR	Le nettoyage se fait uniquement à l'aide d'un torchon ou d'une serviette légèrement mouillée.
NL	Reinig alleen met een stofdoek of een lichtjes vochtige doek. Gebruik geen schurende poetsmiddelen.
IT	Pulire esclusivamente con un panno o un asciugamano umido.
HU	A tisztítás kizárólag törölruha vagy enyhén nedvesített törölköző segítségével végezhető. Súroló hatású tisztítoszereket nem szabad használni.
RU	Очищайте от пыли тряпкой или слегка влажной ветошью. Не допускается применение чистящих средств, не предназначенных для ухода за мебелью.
RO	Curățarea trebuie efectuată numai cu o cârpă sau cu un prosop ușor umezit. Nu utilizați agenți de curățare abrazivi.
SK	<b>Čistenie je nutné vykonávať pomocou suchej alebo mierne navlhčenej handričky. Nepoužívajte abrazívne čistiace prostriedky!</b>
TR	Lütfen sadece bir toz bezilye veya hafif nemli yumuşak bir bezle siliniz. Aşındırıcı temizlik malzemeleri kullanmayınız.

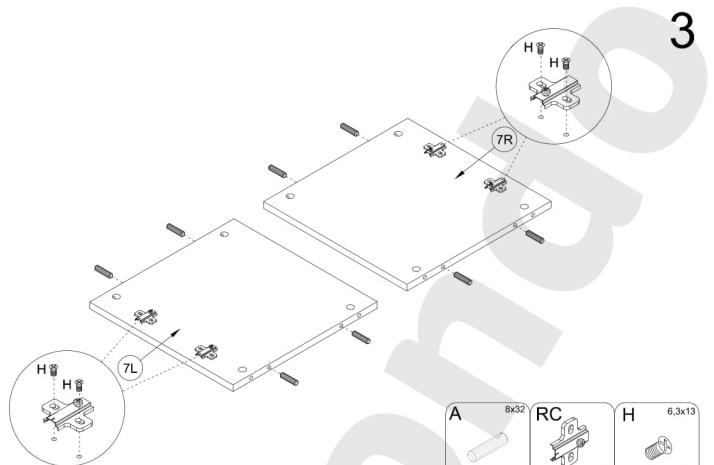
PL	Mocowanie do ściany jest jednocześnie zabezpieczeniem przed przewróceniem - koniecznie zamontować! Do niektórych rodzajów ścian koniecznie zastosować specjalne kołki mocujące.
CZ	Montáž na stěnu slouží jako ochrana proti převrhnutí - bezpodmínečně umístěte! U některých typů stěn může být zapotřebí speciální hmoždinka!
DE	Wandbefestigung dient als Kipperschutz - unbedingt anbringen! bei einigen Wandtypen kann ein Spezialdübel erforderlich sein!
GB	The wall fastening serves to prevent tipping - be absolutely sure to mount it! For certain wall types, a special wall plug may be necessary!
FR	La fixation murale sert de protection contre le basculement - à installer impérativement! Pour certains types de murs il faut des chevilles spéciales!
NL	Bevestiging aan de muur dient als kantelbescherming - zeker en vast bevestigen! Bij enkele muurtypes is een speciale plug misschien vereist!
IT	Il fissaggio alla parete serve da protezione anti-ribaltamento-attaccarla assolutamente! Per alcune strutture di parete può essere necessario un tassello speciale!
HU	A terméket a falhoz kell rögzíteni, különben az felborulhat! Egyes fal típusoknál speciális tiplét kell használni!
RU	Обязательно установите крепление на стене во избежание опрокидывания! Для некоторых типов стен может потребоваться специальный дюбель!
RO	Sistemul de fixare la perete servește ca protecție la răsturnare - de montat obligatoriu! Pentru unele tipuri de pereți este posibil să fie necesar un diblu special!
SK	<b>Upevnenie na stenu slúži ako ochrana pred prevrátením - bezpodmínečne ho vykonajte! Pre niektoré druhy stien môže byť potrebná špeciálna hmoždinka!</b>
TR	Duvardaki sabitleme, devrilmeye karşı bir emniyet tedbiridir ve mutlaka monte edilmelidir! Bazı duvar tiplerinde bunun için özel bir dübel gerekli olabilir!



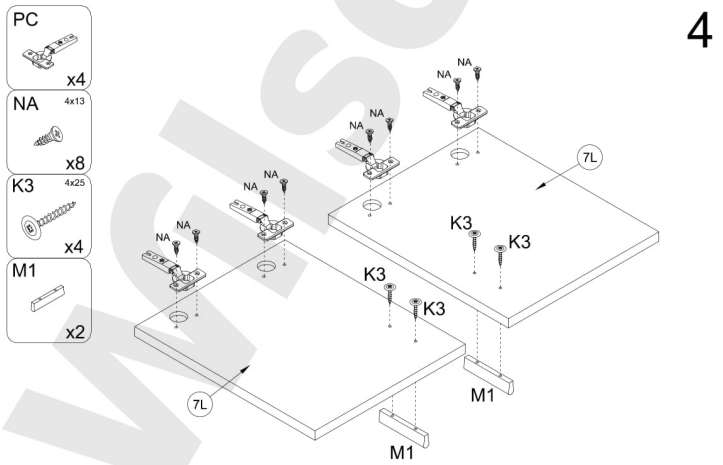
1



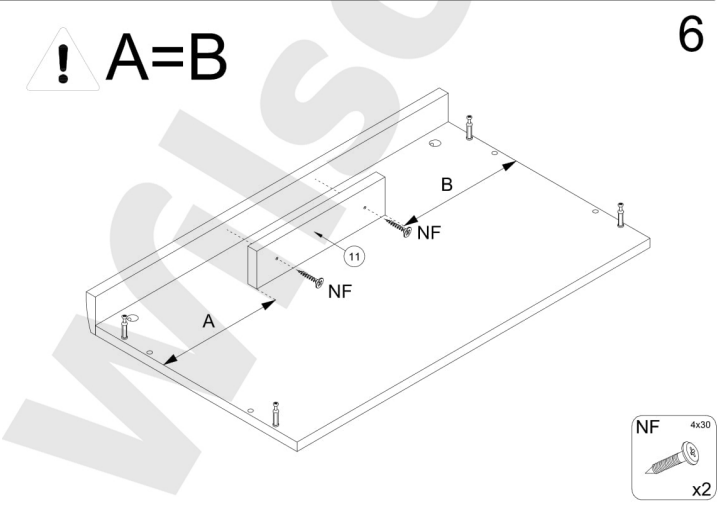
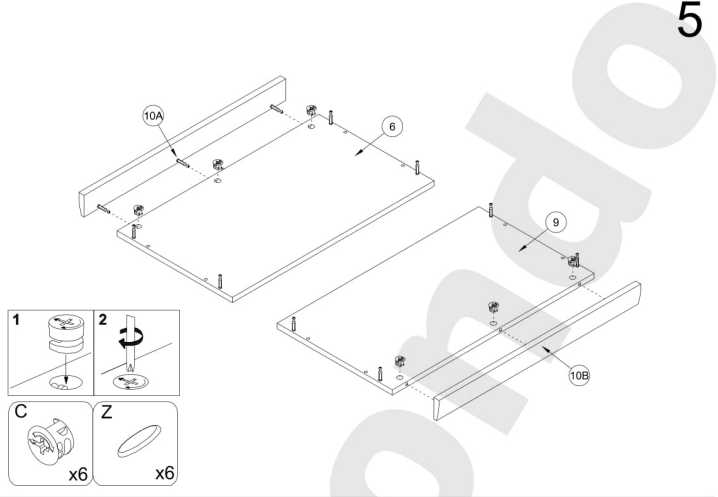
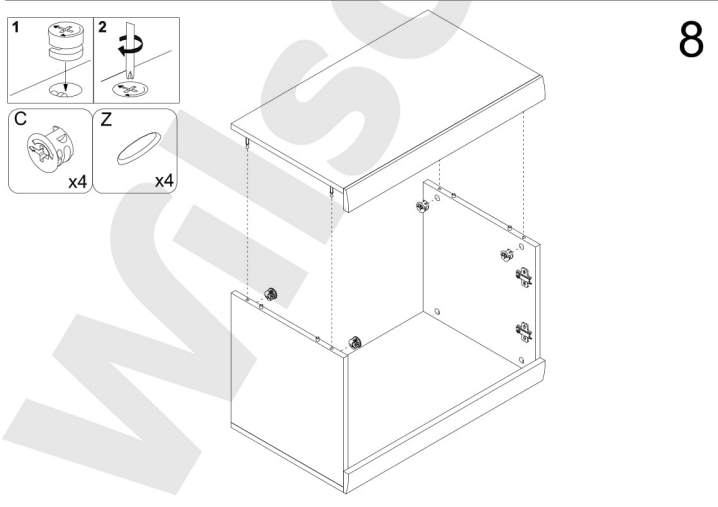
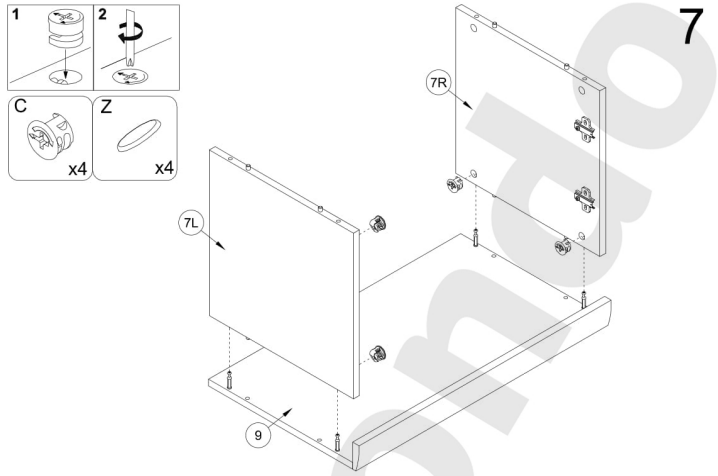
2

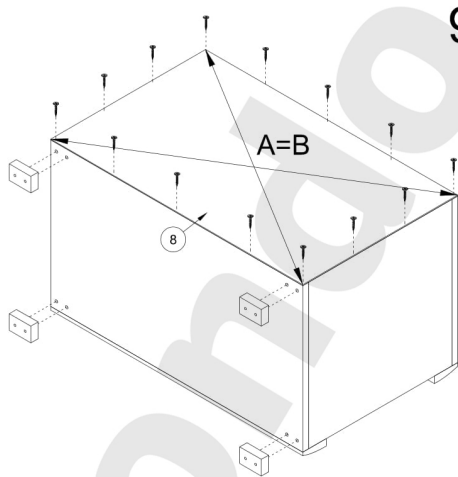
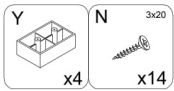
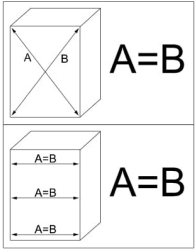


3

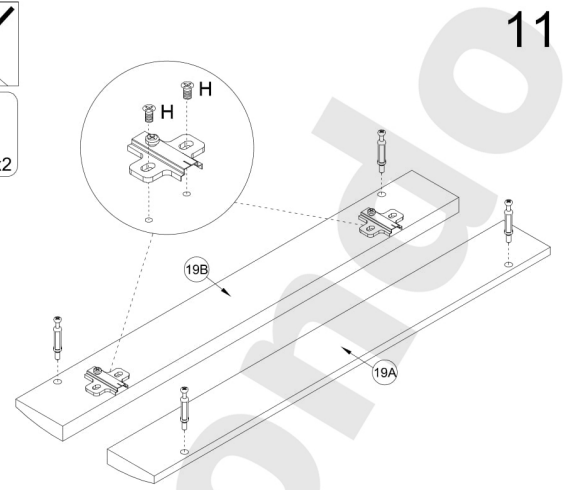
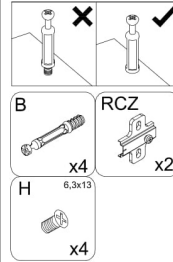


4

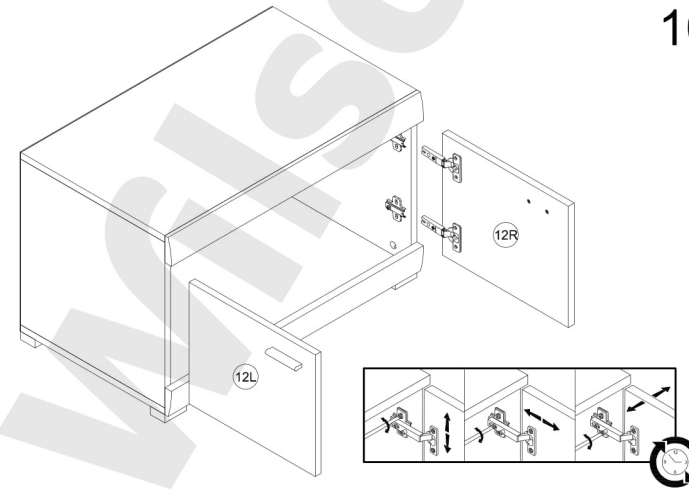




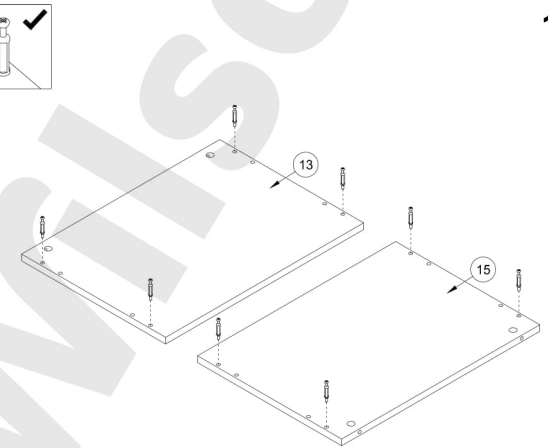
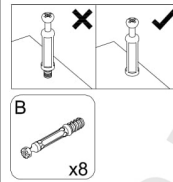
9



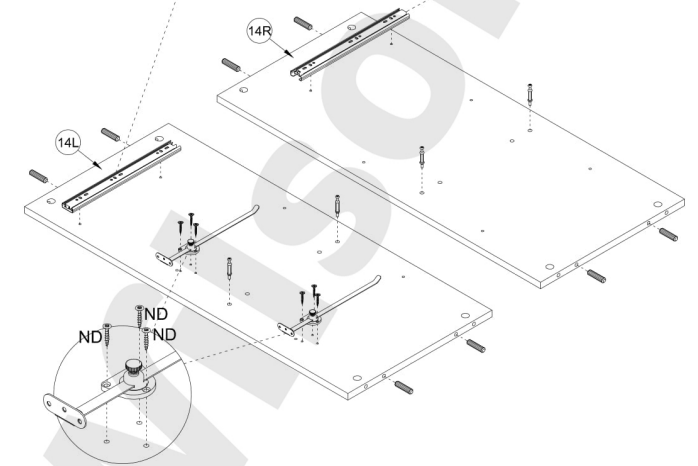
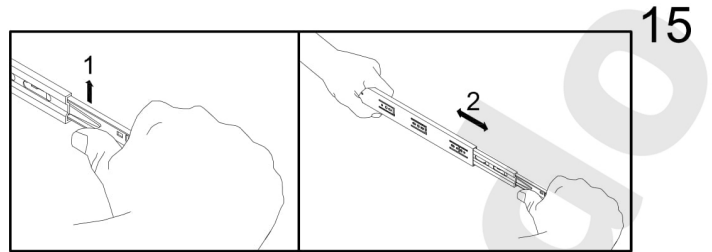
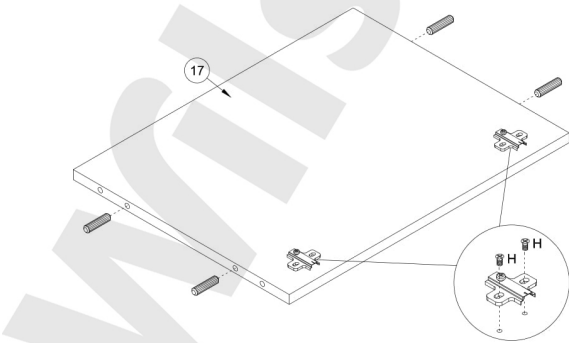
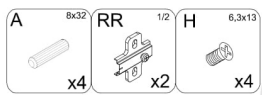
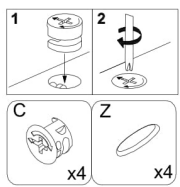
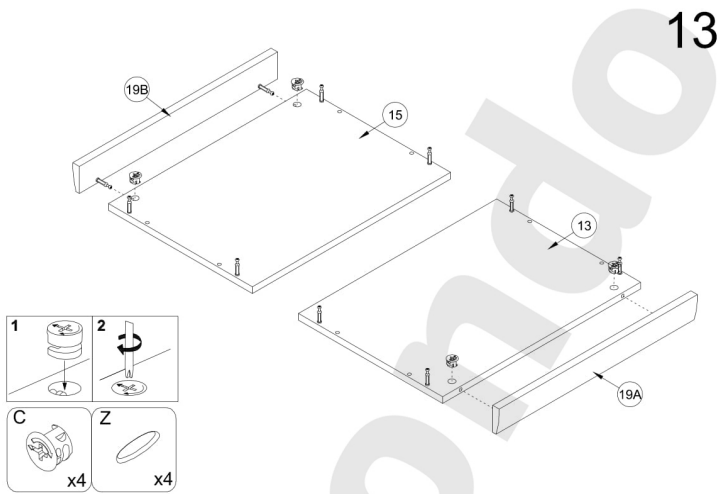
11

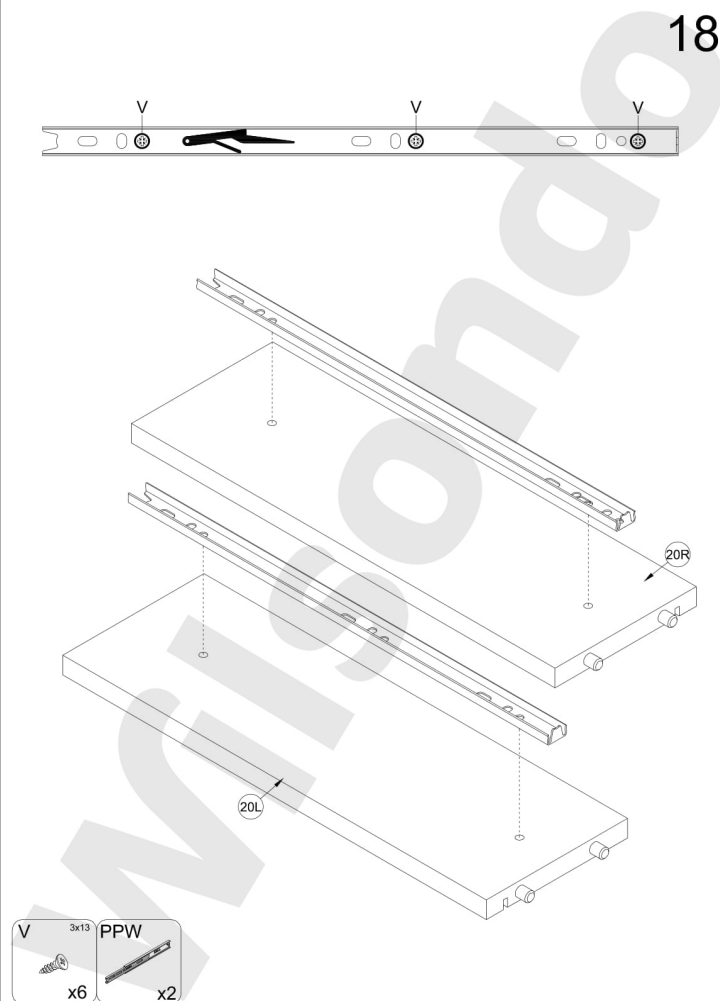
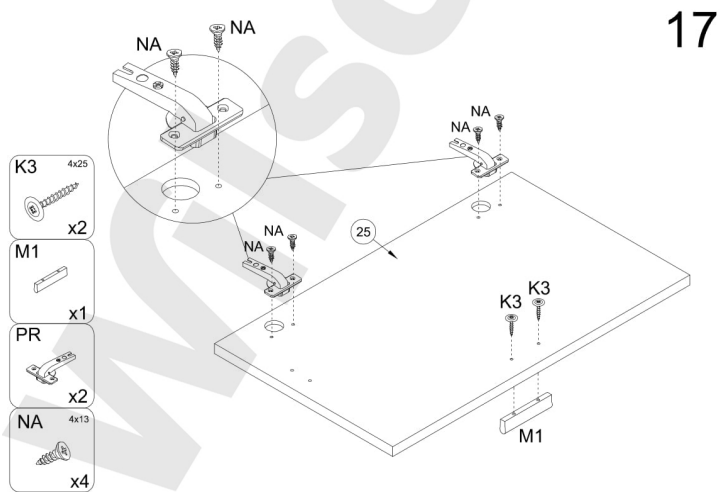
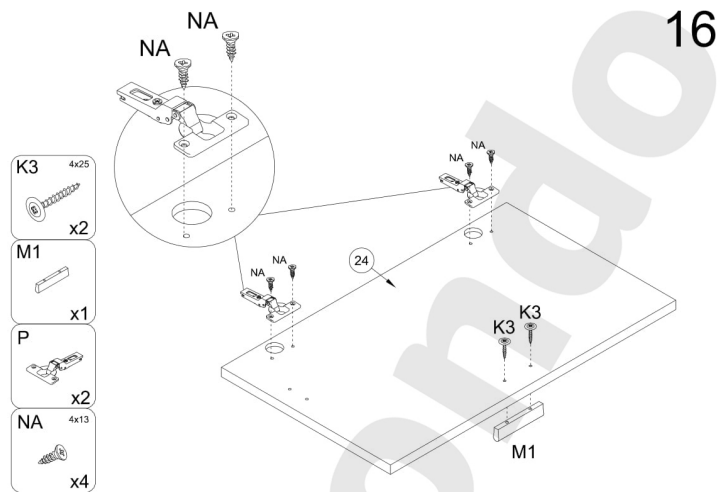


10

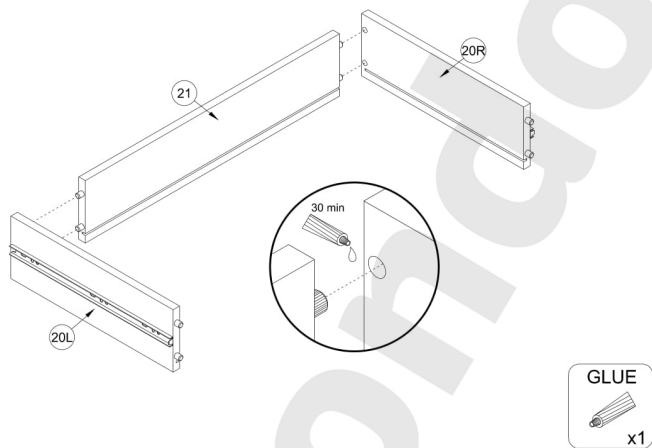


12

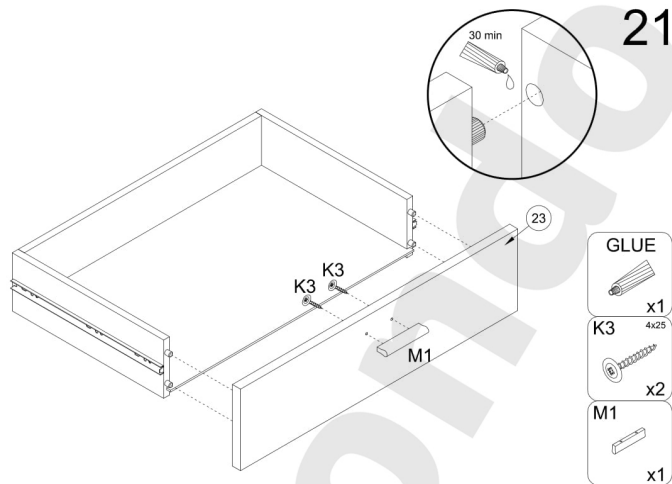




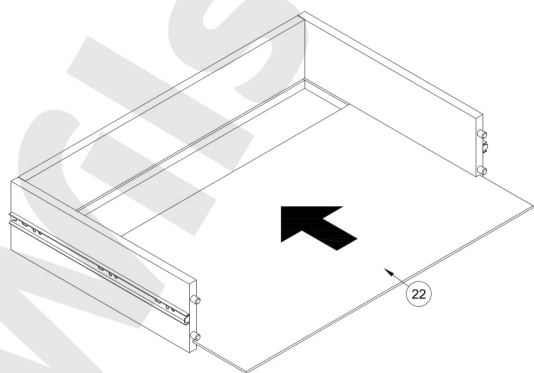
19



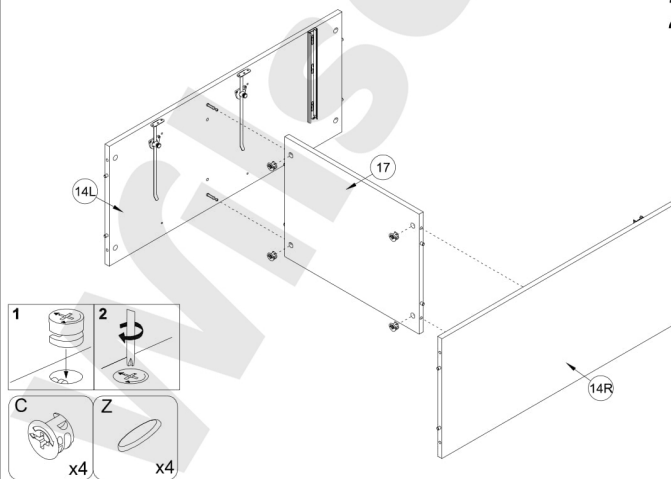
21



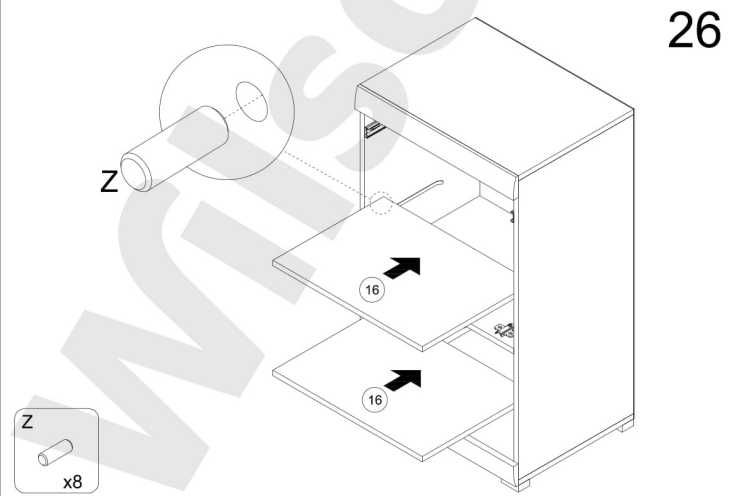
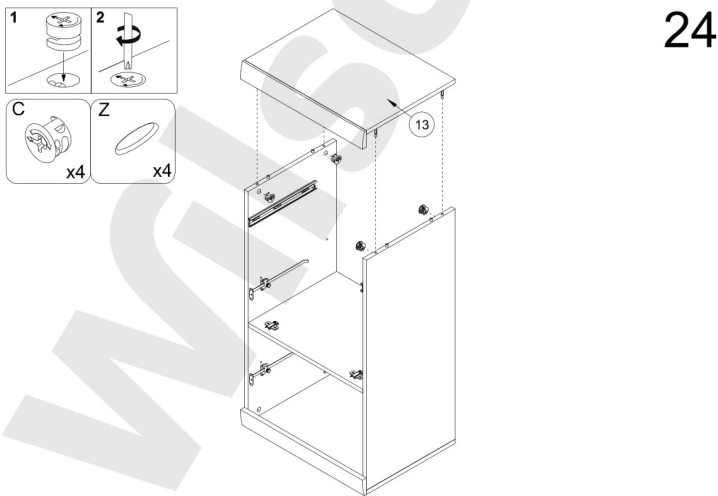
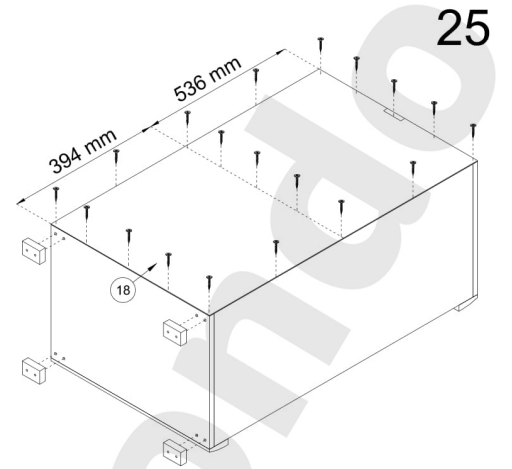
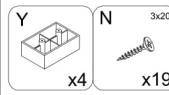
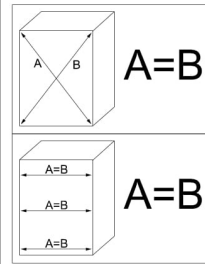
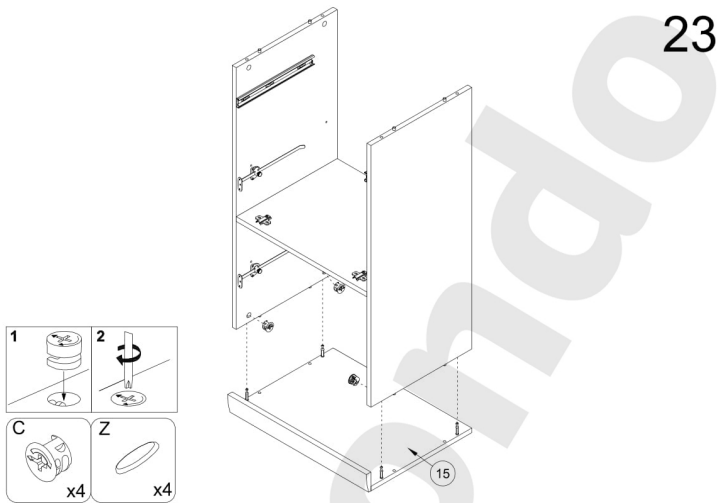
20

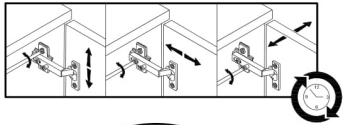


22

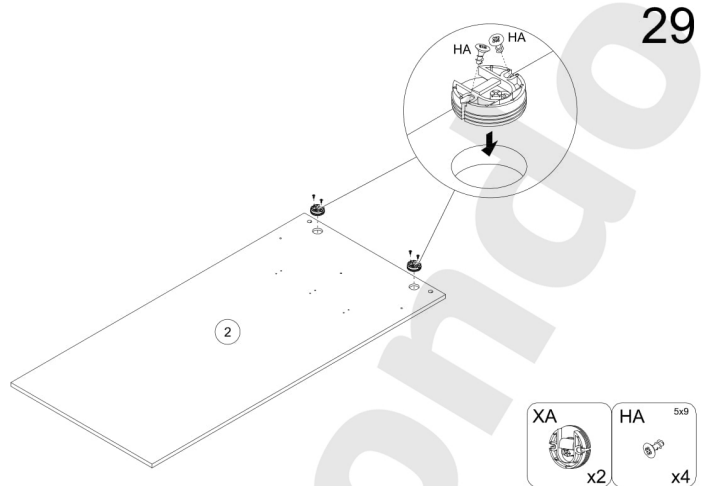
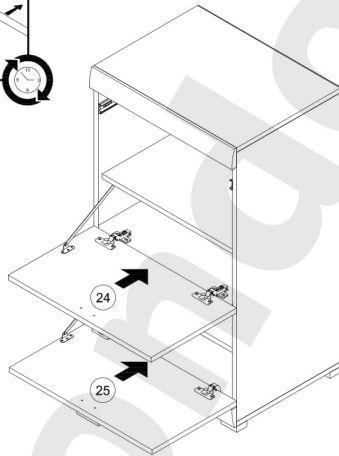
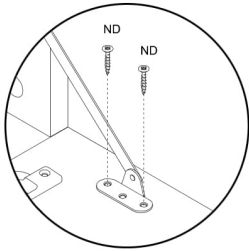




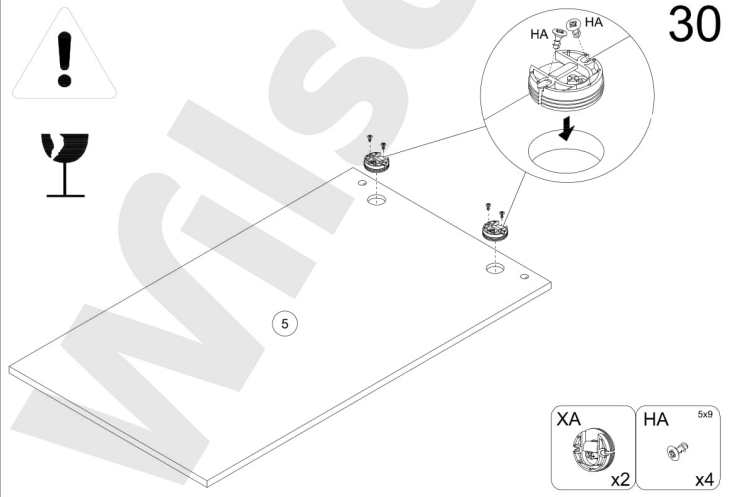




27

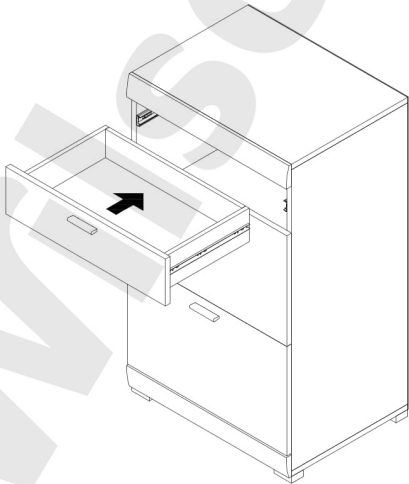


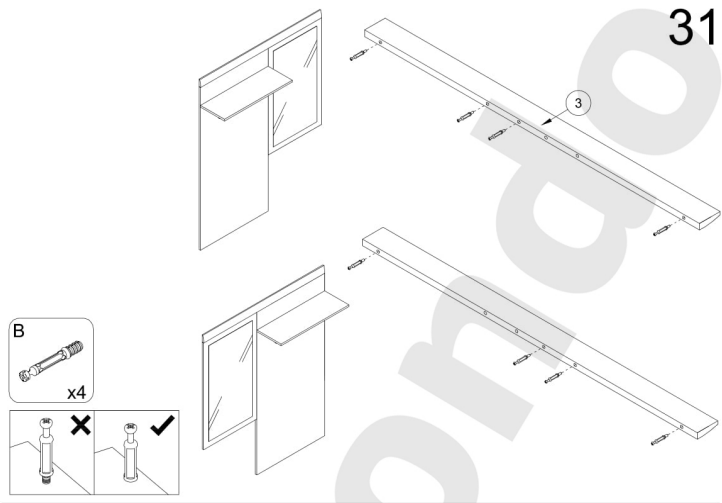
29



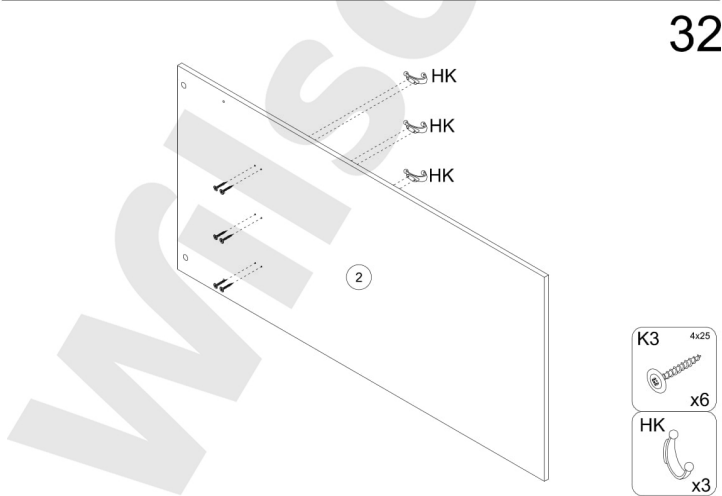
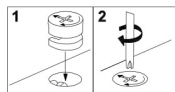
30

28

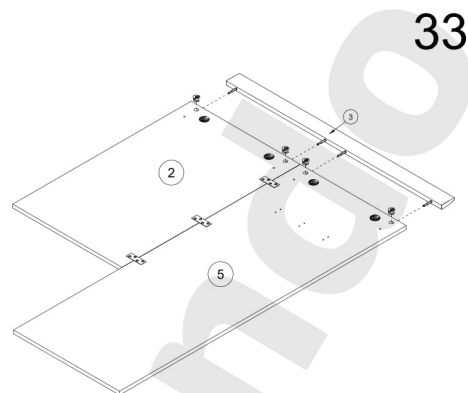




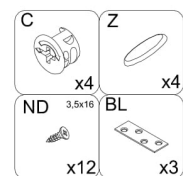
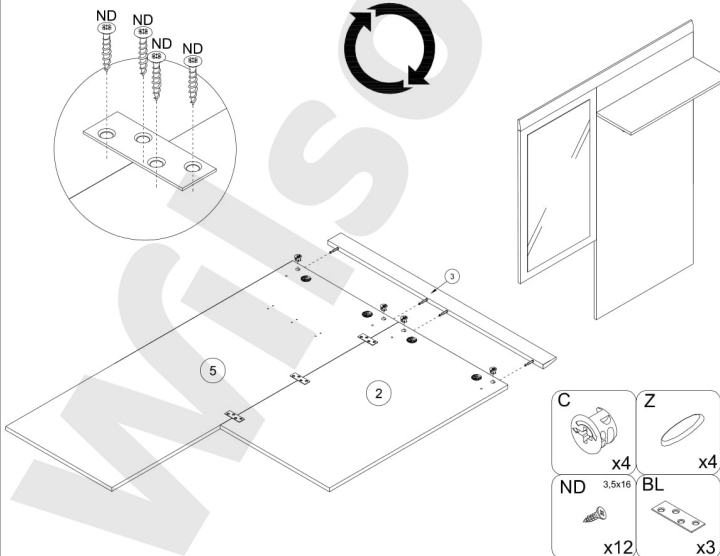
31



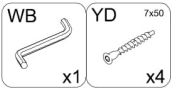
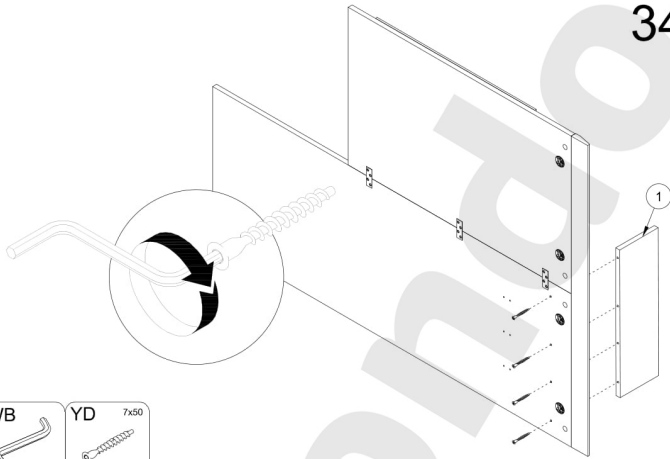
32



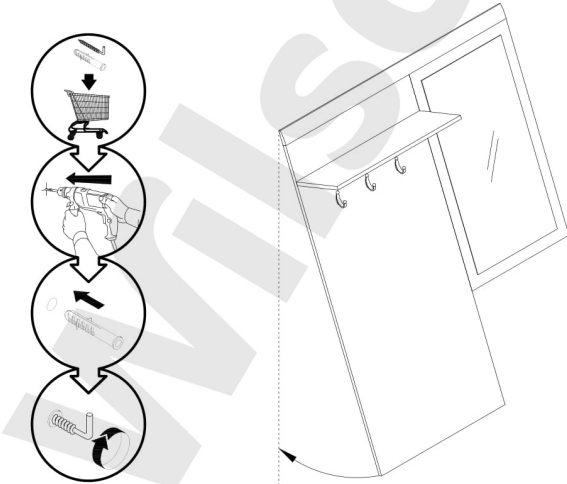
33



34



35



36

