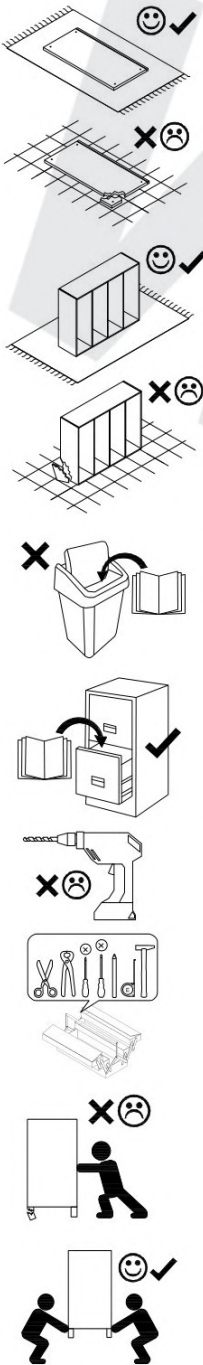
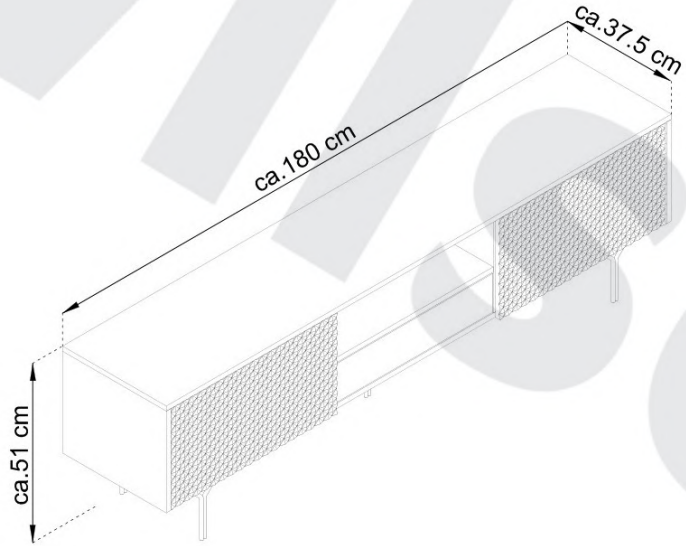


RAVEN

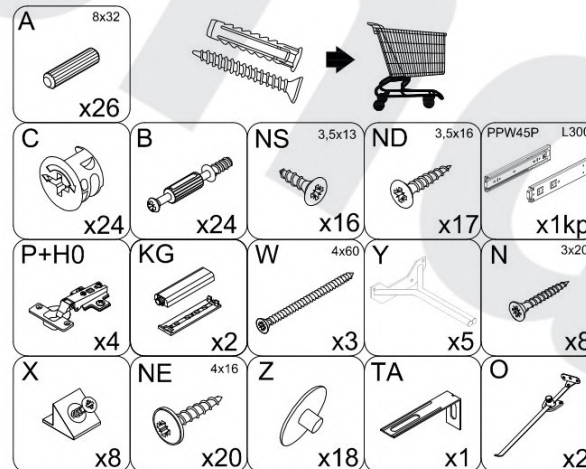
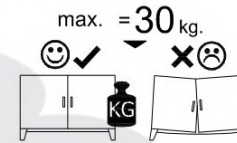
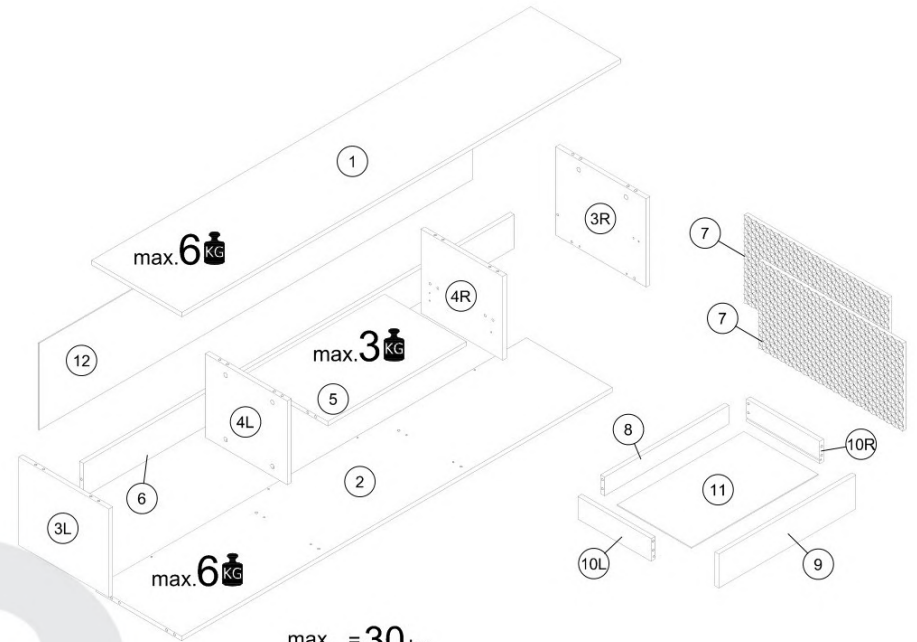
RTV 180



- (D) Montageanleitung
- (FR) Notice de montage
- (NL) Handleiding voor de montage
- (CZ) Montážní návod
- (HU) Szerelési útmutató
- (TR) Montaj talimatı

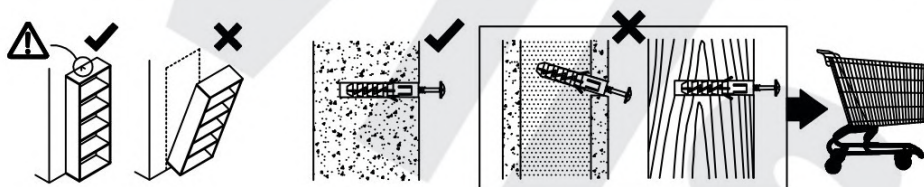
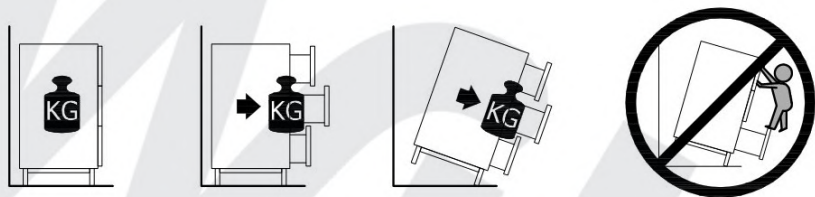
- (GB) Assembly Instructions
- (IT) Istruzioni di montaggio
- (PL) Instrukcja montaży
- (SK) Návod na montáž
- (RO) Instrucțiuni de montaj
- (RU) Инструкции по монтажу

03.02.2023

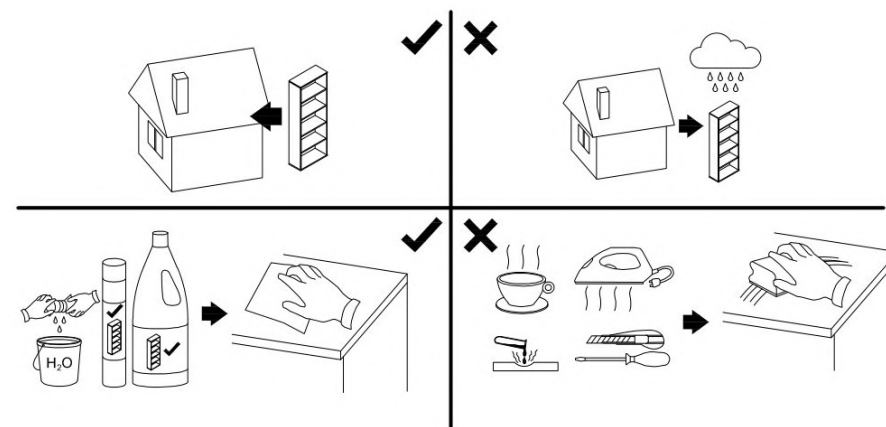


1	1801	375	16	x1	2 / 2
2	1768	354	16	x1	2 / 2
3L	375	314	16	x1	2 / 2
3R	375	314	16	x1	2 / 2
4L	334	298	16	x1	2 / 2
4R	334	298	16	x1	2 / 2
5	568	332	16	x2	2 / 2
6	1768	120	16	x1	2 / 2
7	591	311	18	x2	2 / 2
8	510	62	16	x1	2 / 2
9	562	119	16	x1	2 / 2
10L	300	80	16	x1	2 / 2
10R	300	80	16	x1	2 / 2
11	521	305	2.5	x1	2 / 2
12	1779	309	2.5	x1	2 / 2

! Uwaga • Upozornění • Achtung • Attention • Caution • Figyelem **!**
! Attenzione • Opgelet • Внимание • Atenție • Upozornenie • Dikkat **!**

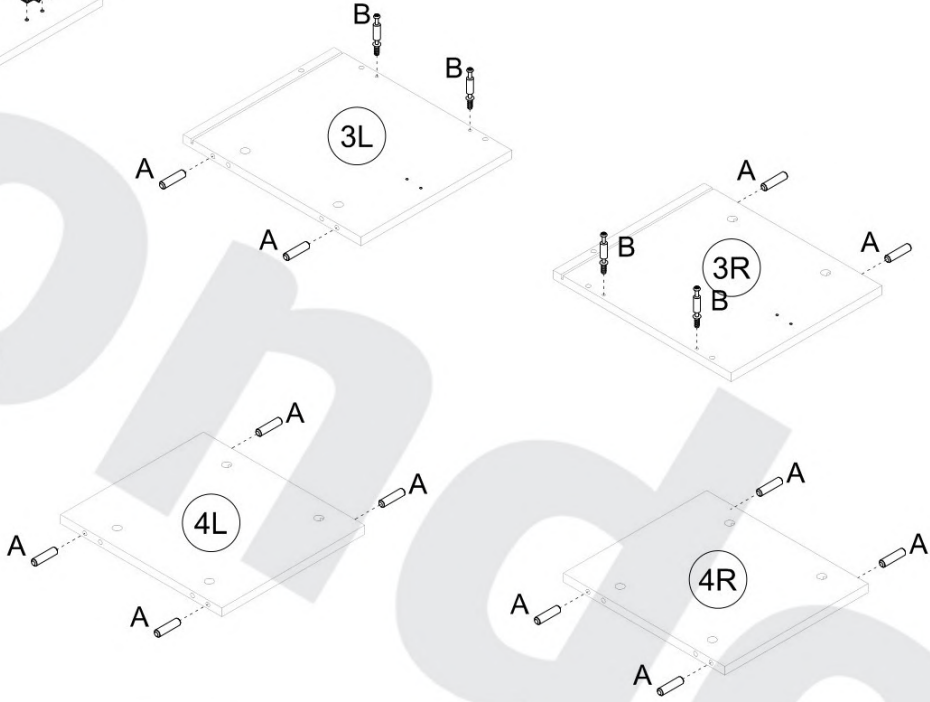
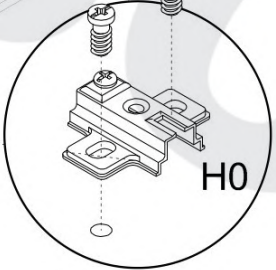
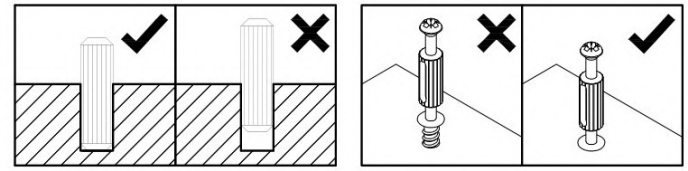
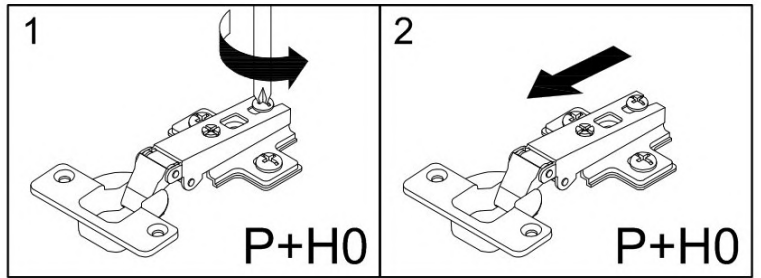
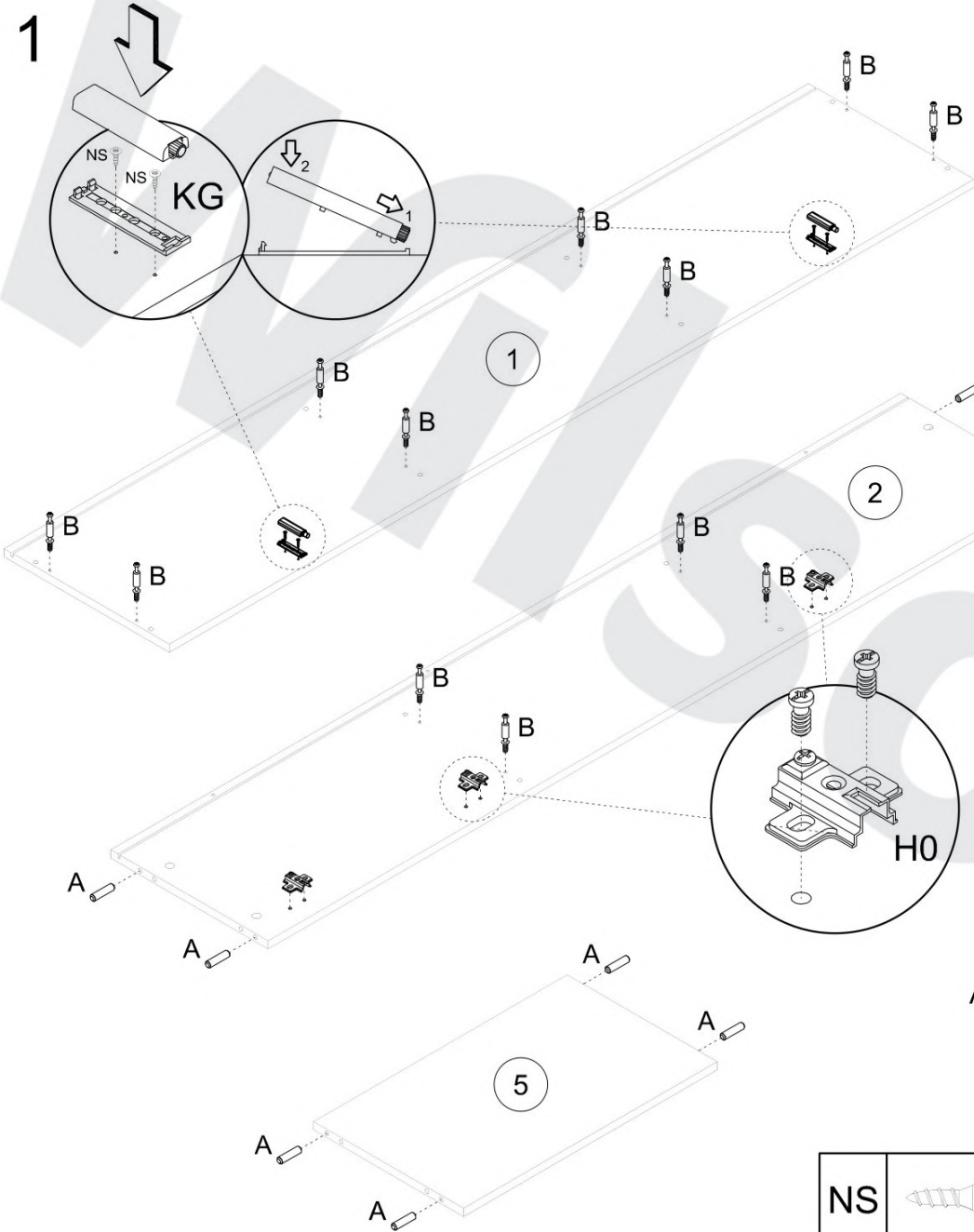


! Uwaga • Upozornění • Achtung • Attention • Caution • Figyelem **!**
! Attenzione • Opgelet • Внимание • Atenție • Upozornenie • Dikkat **!**

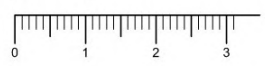


PL	Mocowanie do ściany jest jednocześnie zabezpieczeniem przed przewróceniem - koniecznie zamontować! Do niektórych rodzajów ścian koniecznie zastosować specjalne kołki mocujące.
CZ	Montáž na stěnu slouží jako ochrana proti převrnutí - bezpodmínečně umístěte! U některých typů stěn může být zapotřebí speciální hmoždinka!
DE	Wandbefestigung dient als Kippschutz - unbedingt anbringen! bei einigen Wandtypen kann ein Spezialdübel erforderlich sein!
GB	The wall fastening serves to prevent tipping - be absolutely sure to mount it! For certain wall types, a special wall plug may be necessary!
FR	La fixation murale sert de protection contre le basculement - à installer impérativement! Pour certains types de murs il faut des chevilles spéciales!
NL	Bevestiging aan de muur dient als kantelbescherming - zeker en vast bevestigen! Bij enkele muurtypes is een speciale plug misschien vereist!
IT	Il fissaggio alla parete serve da protezione anti-ribaltamento-attaccarla assolutamente! Per alcune strutture di parete può essere necessario un tassello speciale!
HU	A termék a falhoz kei rögzítési, különben az felborulhat! Eyges faltípusoknál speciális tiplit kell használni!
RU	Обязательно установите крепление на стене во избежание опрокидывания! Для некоторых типов стен может потребо- ваться специальный дюбель!
RO	Sistemul de fixare la perete servește ca protecție la răsturnare - de montat obligatoriu! Pentru unele tipuri de pereți este posibil să fie necesar un diblu special!
SK	Upevnenie na stenu slúži ako ochrana proti prevráteniu - bezpodmienečne použiť! Pre niektoré druhy stien môže byť potrebná špeciálna hmoždinka!
TR	Duvardaki sabitleme, devrilmeye karşı bir emniyet tedbiridir ve mutlaka monte edilmelidir! Bazı duvar tiplerinde bunun için özel bir dübel gerekli olabilir!

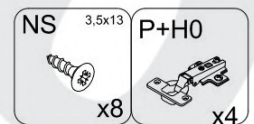
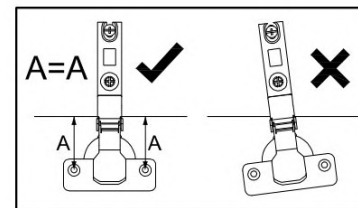
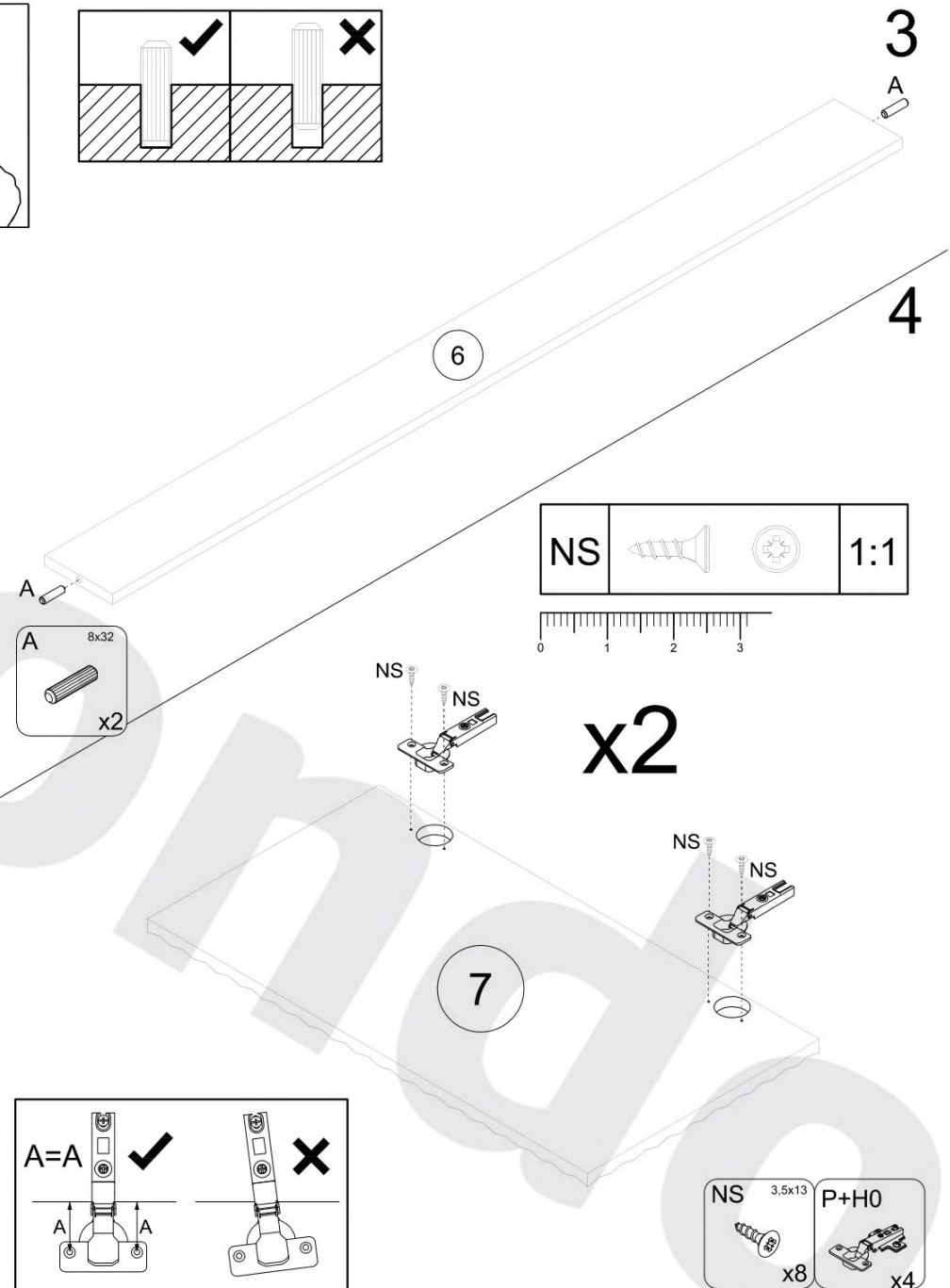
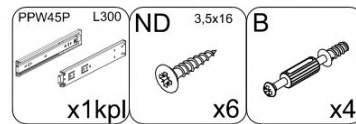
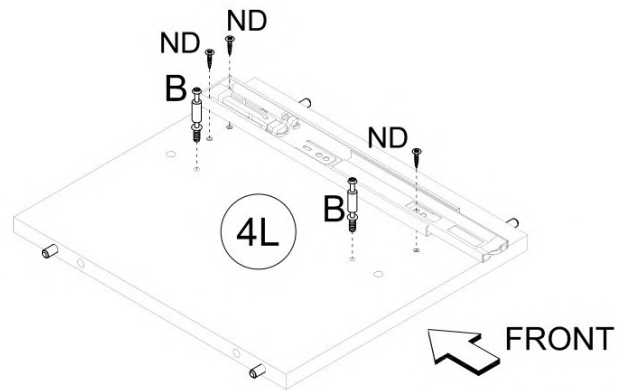
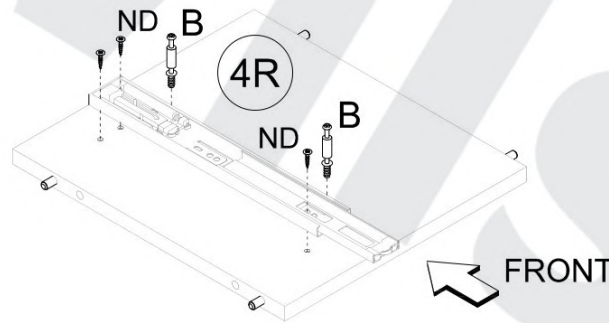
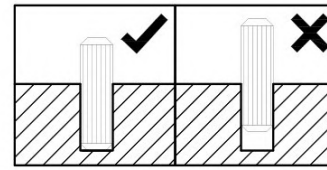
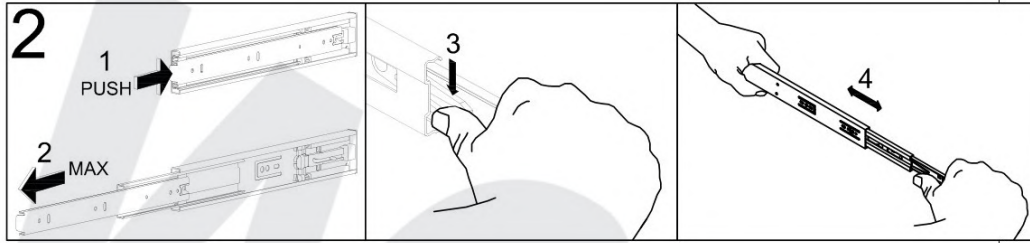
PL	Czyszczenie należy wykonać wyłącznie za pomocą ściereczki lub lekko nawilżonego ręcznika. Nie stosować środków czyszczących do szorowania.
CZ	Čistění je nutné vykonávat výhradně pomocí utěrky nebo lehce navlhčeného ručníku. Nepoužívejte čističí prostředky obsahující abrazivní částice.
DE	Bitte nur mit einem Staubtuch oder leicht feuchtern Lappen reinigen. Keine scheuernden Putzmittel verwenden.
GB	Please only clean with a duster or damp cloth. Do not use any abrasive cleaners.
FR	Le nettoyage se fait uniquement à l'aide d'un torchon ou d'une serviette légèrement mouillée.
NL	Reinig alleen met een stofdoek of een lichtjes vochtige doek. Gebruik geen schurende poetsmiddelen.
IT	Pulire esclusivamente con un panno o un asciugamano umido.
HU	A tisztítás kizárólag törölkőruha vagy enyhén nedvesített törölköző segítségével végezhető. Súroló hatású tisztítószereket nem szabad használni.
RU	Очищайте от пыли тряпкой или слегка влажной ветошью. Не допускается применение чистящих средств, не предназначенных для ухода за мебелью.
RO	Curățarea trebuie efectuată numai cu o cârpă sau cu un prosop ușor umezit. Nu utilizați agenți de curățare abrazivi.
SK	Čistenie je nutné vykonávať výhradne pomocí utierky alebo ľahko zvlhnutým ručníkom. Nepoužívajte čistiace prostriedky obsahujúce abrazívne častice.
TR	Lütfen sadece bir toz bezilye veya hafif nemli yumuşak bir bezle siliniz. Aşındırıcı temizlik malzemeleri kullanmayınız.



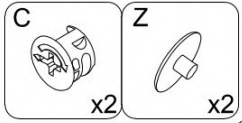
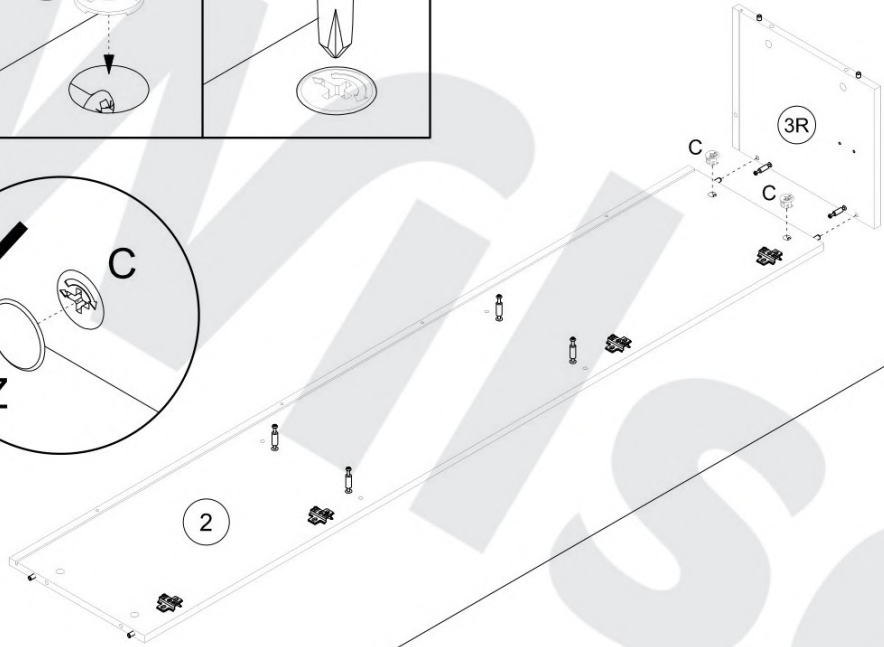
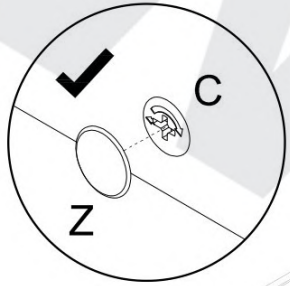
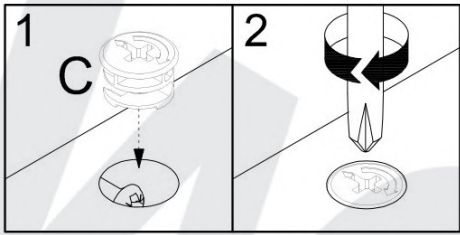
NS			1:1
----	--	--	-----



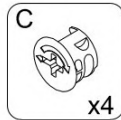
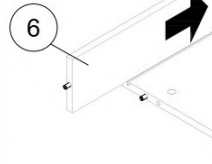
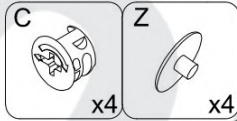
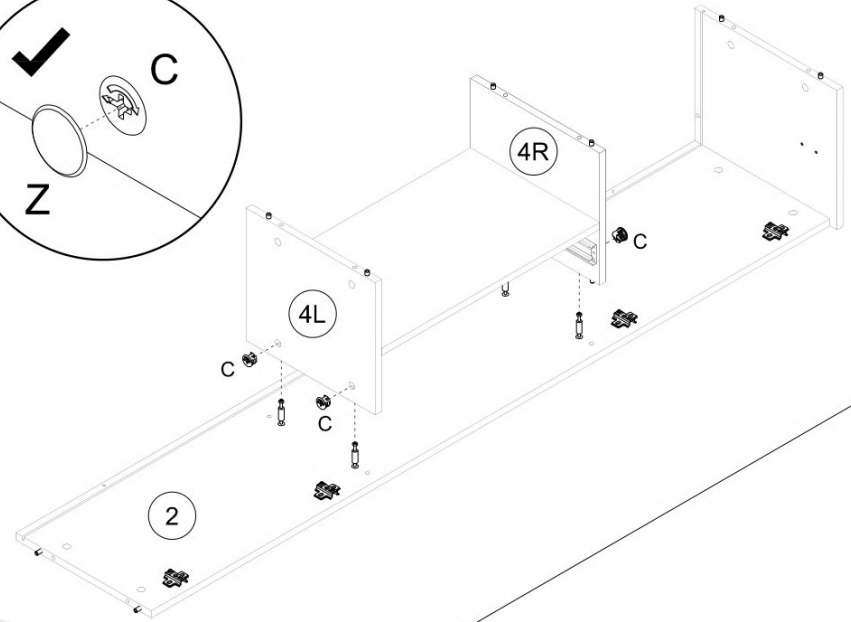
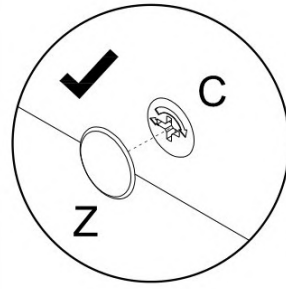
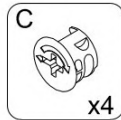
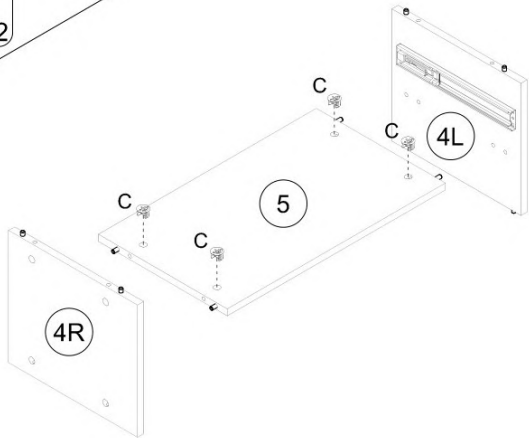
A	8x32	B		P+H0	KG	NS	3.5x13		
	x20		x16		x4		x2		x4



5



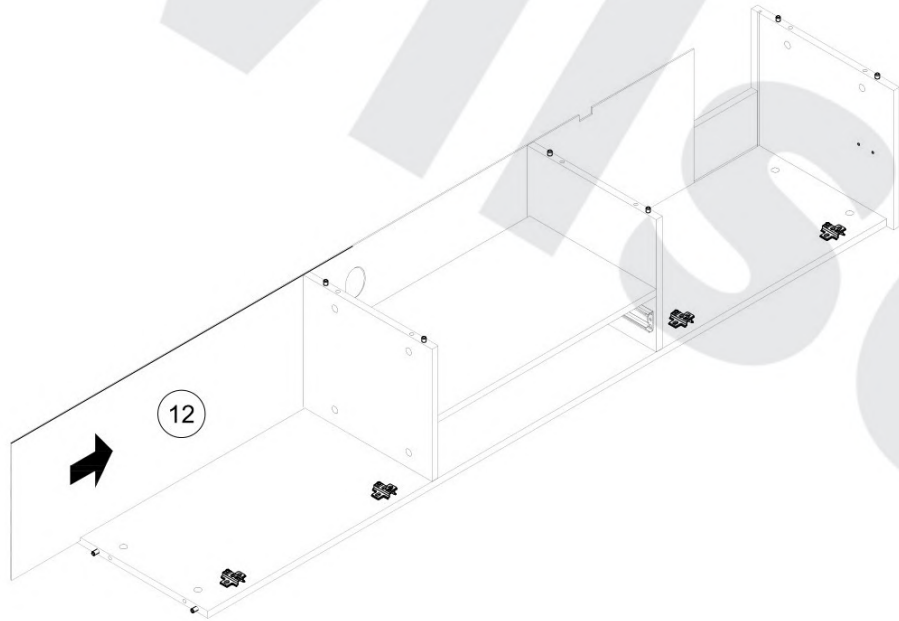
6



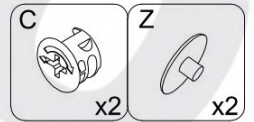
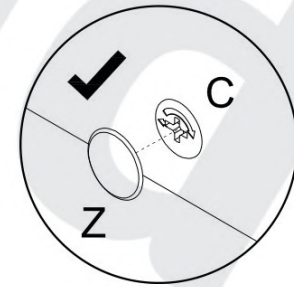
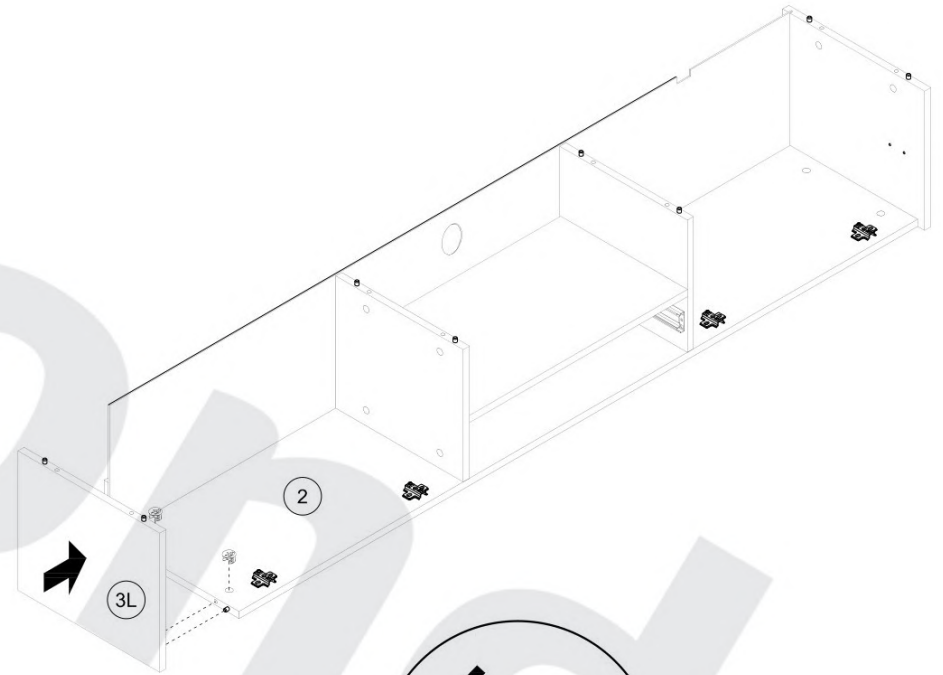
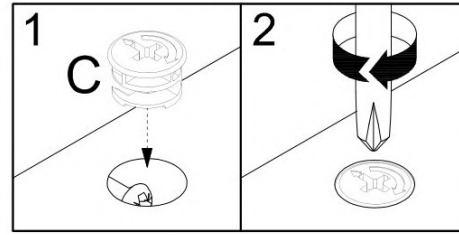
7

8

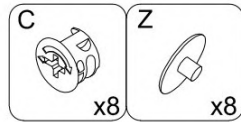
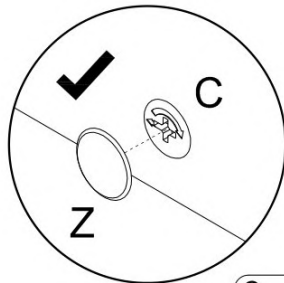
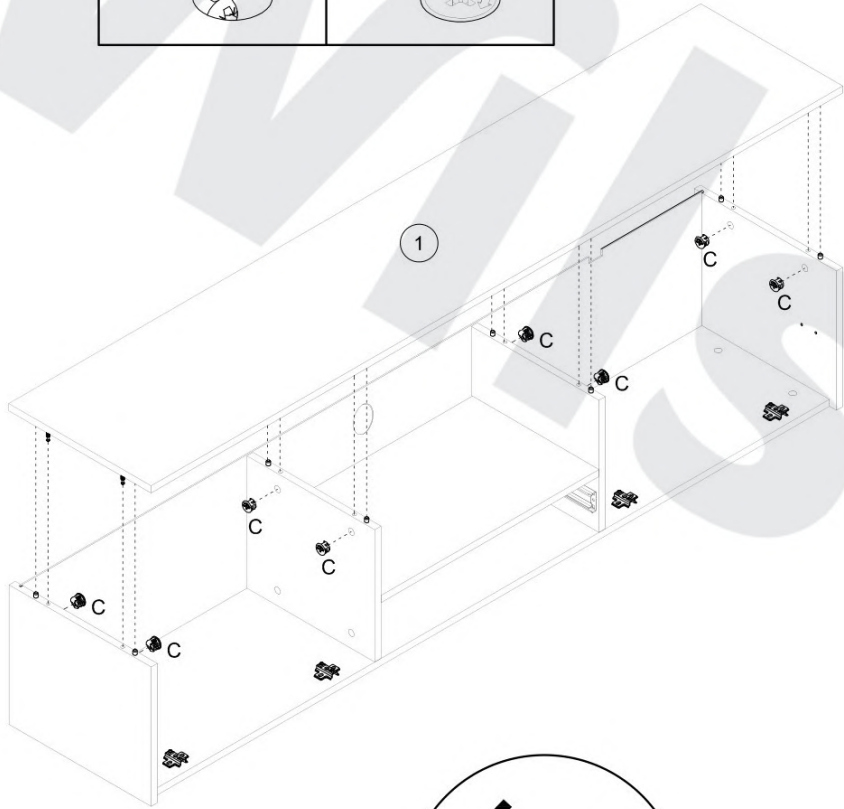
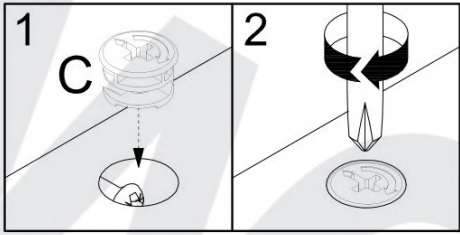
9



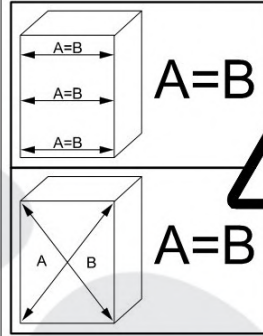
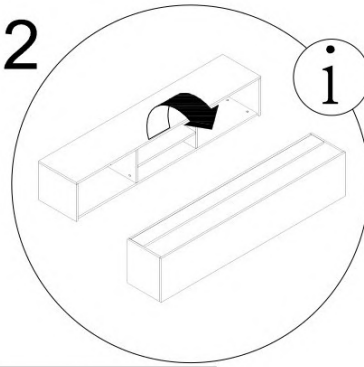
10



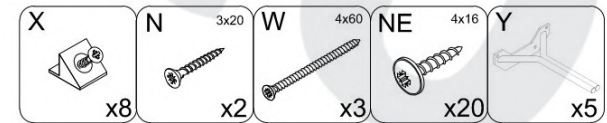
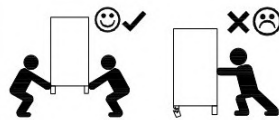
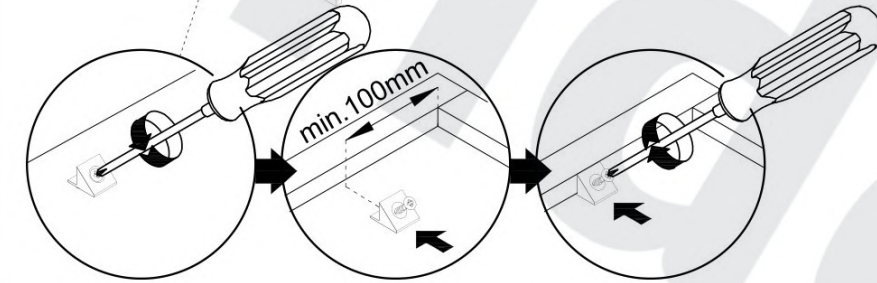
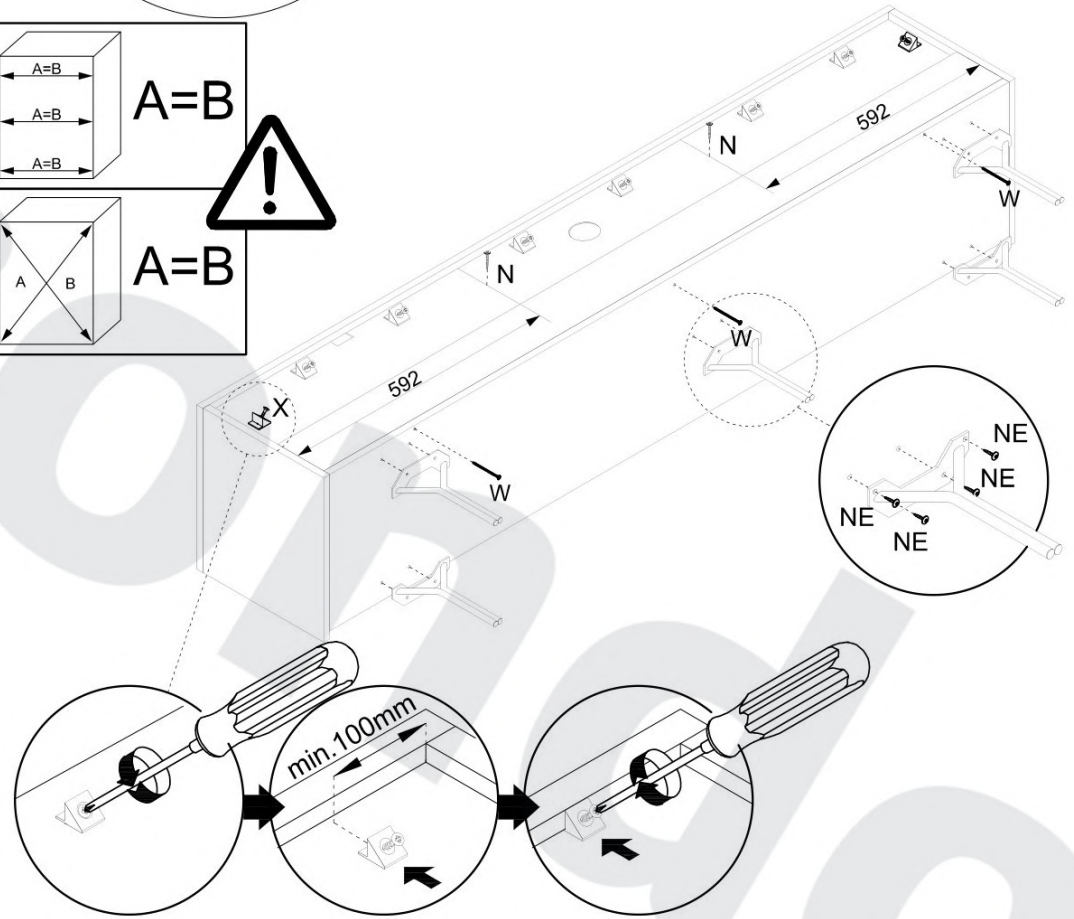
11



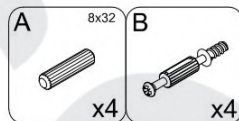
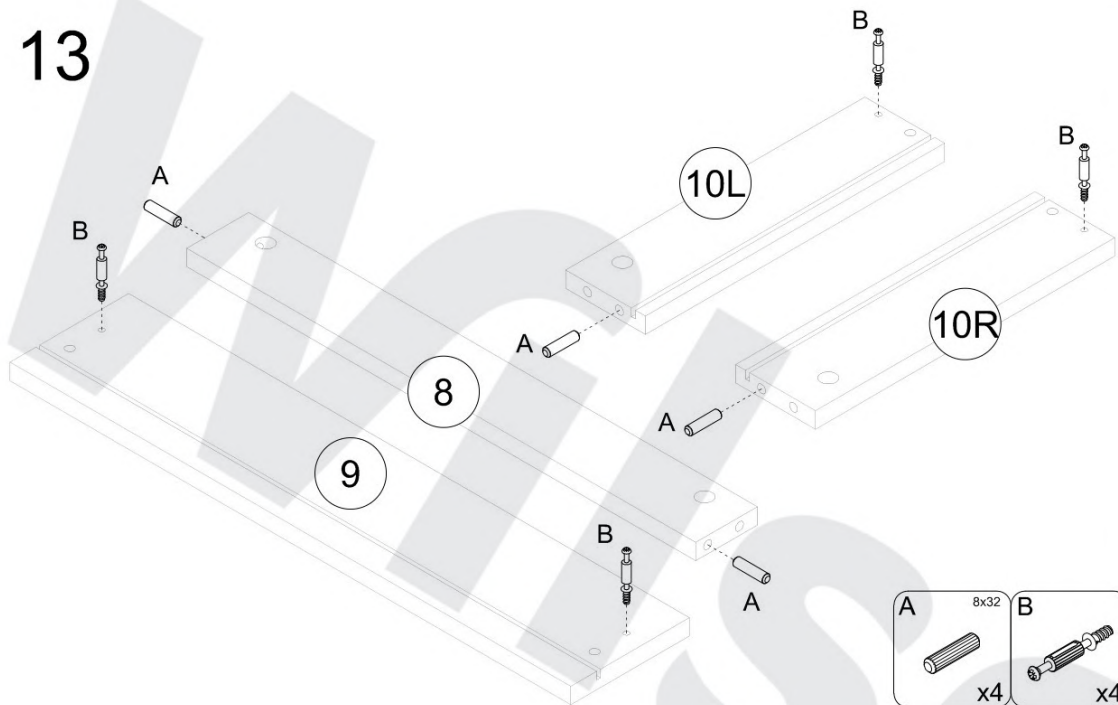
12



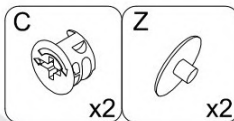
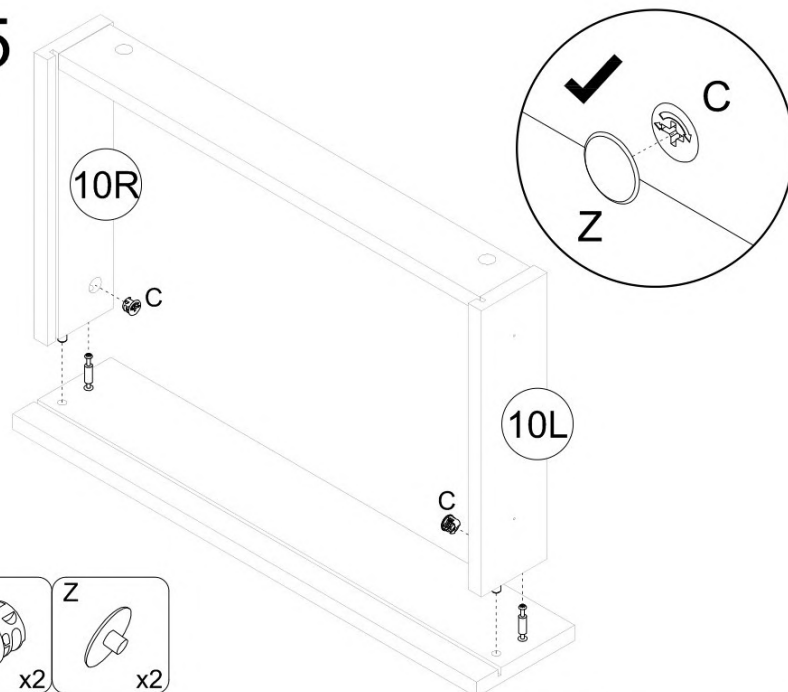
W	1:1		
N	1:1		
NE	1:1		



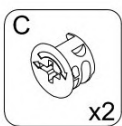
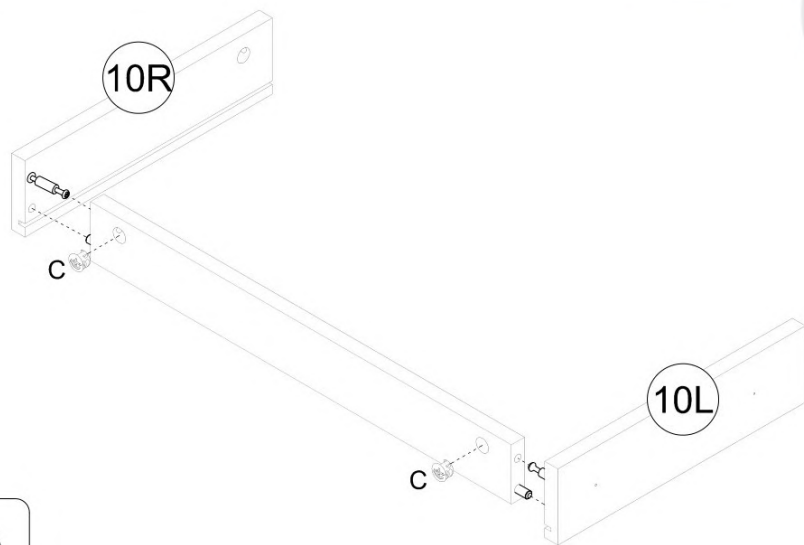
13



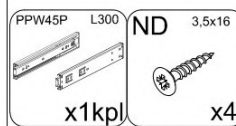
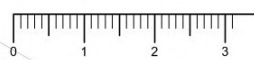
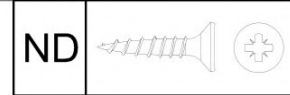
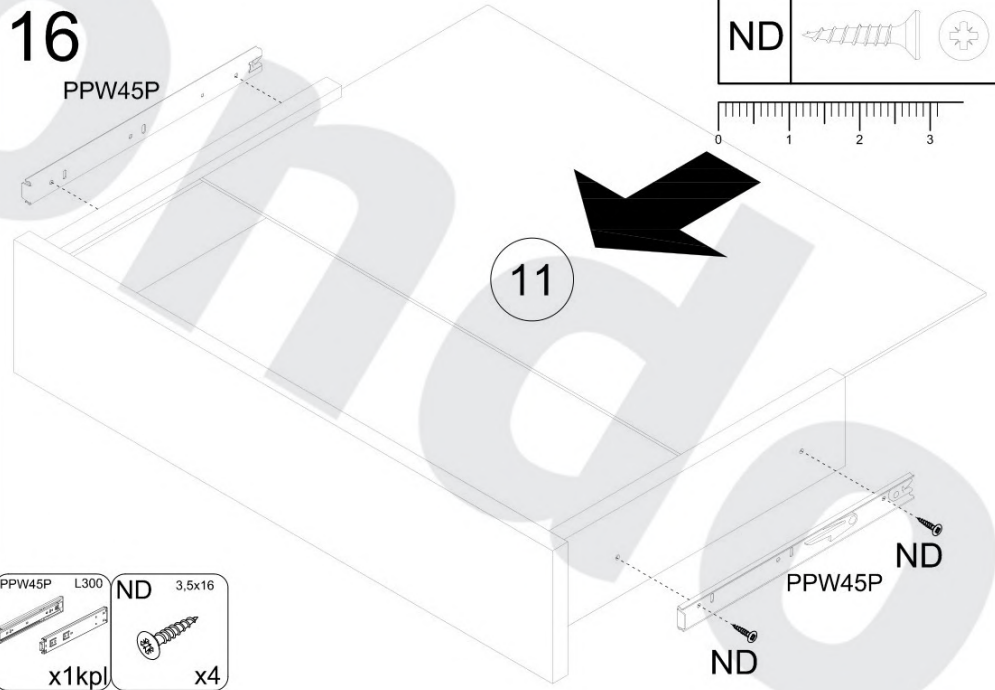
15



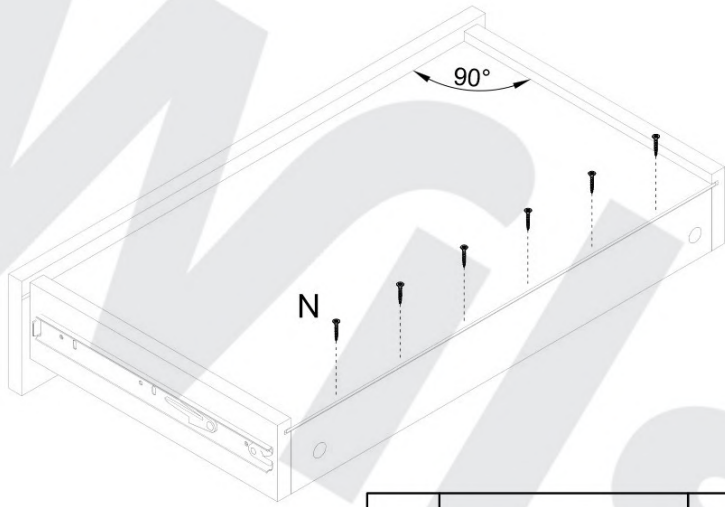
14



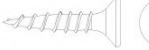

16

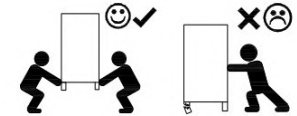
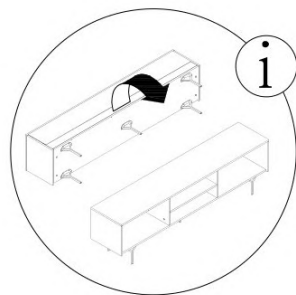
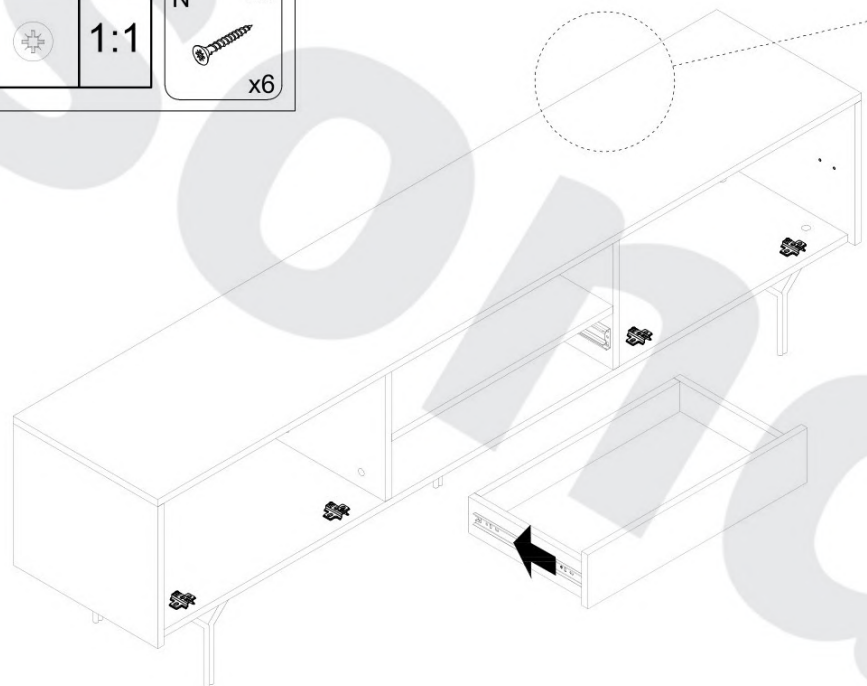
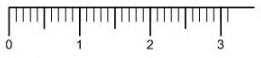


17

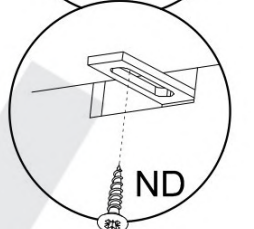
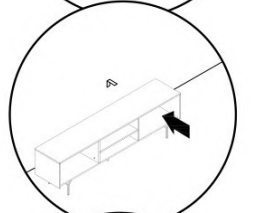
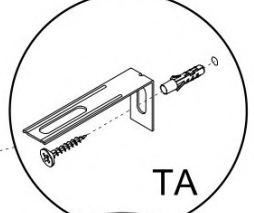
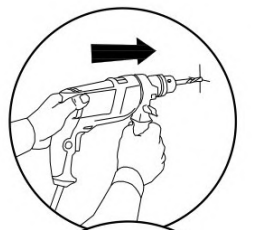




N			1:1
N		3x20	x6



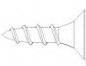

ND			1:1
----	---	---	-----

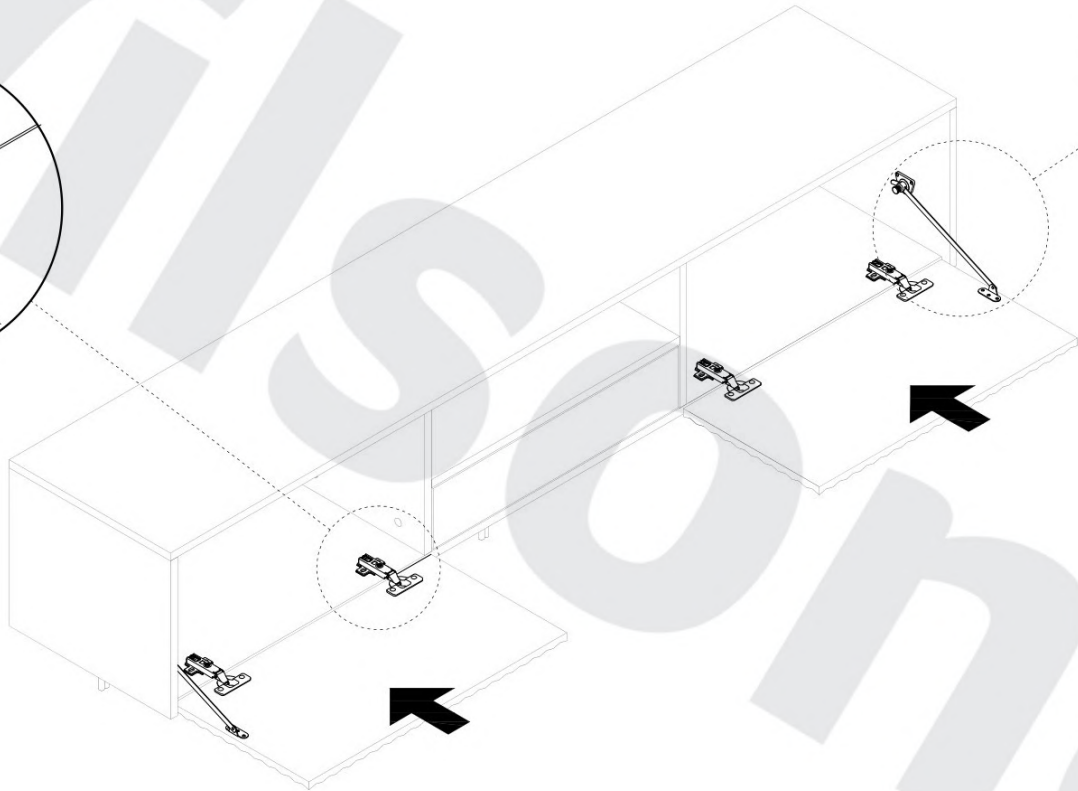
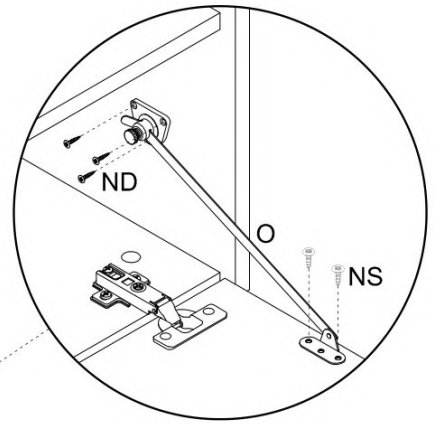
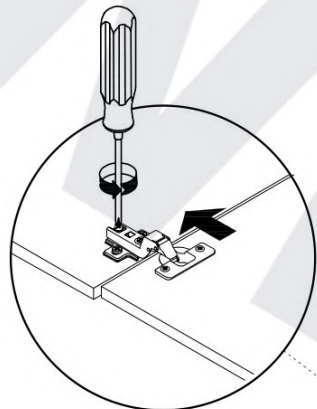
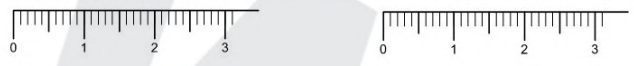





18



ND	3,5x16	TA
	x1	
		x1

ND			1:1	NS			1:1
----	---	---	-----	----	---	---	-----



ND	3,5x16	O	NS	3,5x13
				
x6		x2	x4	

